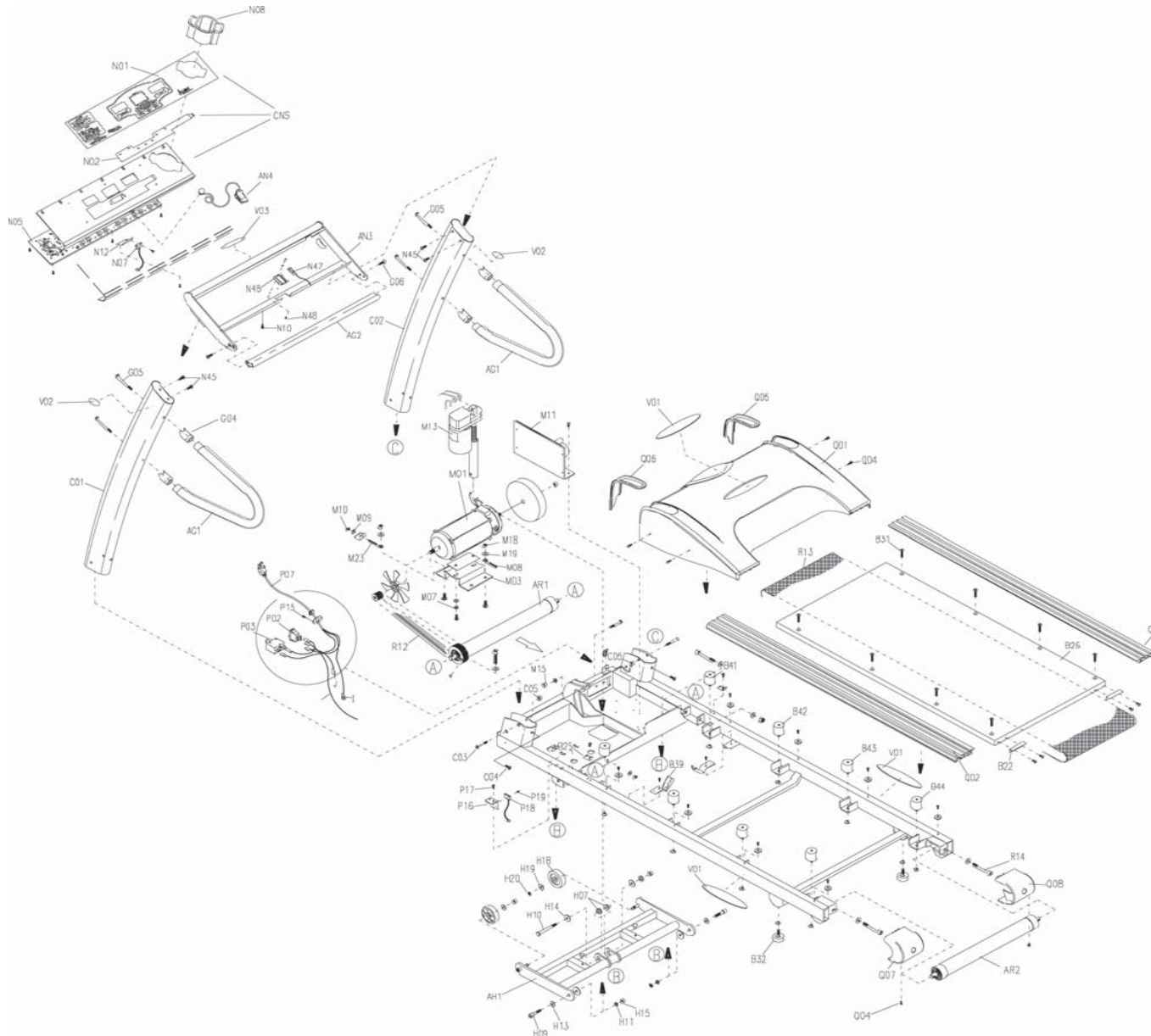


T9500HRT (TM54), T9400HRT (TM56), T9300 (TM55), T9200 (TM49) Exploded Diagram



T9500HRT (TM54), T9400HRT (TM56), T9300 (TM55), T9200 (TM49) Parts List

REF. #	PART #	DESCRIPTION
AG1	026509-Z	REST ARM ASSEMBLY
AH1	024770-AB	RACK ELEVATION LEG INCLINE PLATINUM T9500
AH1	024769-A	RACK ELEVATION PLATFORM T92/T93/T9400HRT
AN3	014920-A	BASE CONSOLE HRT PLATINUM
AN4	013860-B	SAFETY KEY ASSEMBLY
AR1	016474-Z	ROLLER ASSEMBLY FRONT T9500HRT
AR1	016478-Z	ROLLER ASSEMBLY FRONT T9200/T9300/T9400
AR2	009815-C	ROLLER ASSEMBLY REAR
B22	000819-00	DECK EXTENSION PLATE
B25	015054-AC	FIXING PLATE SIDE RAIL
B26	004307-D	DECK RUNNING 605X1190LX25.4 T92/T93/T9400
B26	004299-A	DECK RUNNING 605x1250x25.4 T9500HRT
B31	004562-00	BOLT FH M8X35
B32	000500-00	LEVELER
B39	011786-00	GUIDE BELT PLATFORM
B41	000760-E	ELASTOMER YELLOW 50
B42	000760-C	ELASTOMER RED 40
B42	000764-B	ELASTOMER YELLOW 50
B43	000760-E	ELASTOMER BLUE 60
B44	000763-E	ELASTOMER BLACK 90
C01	024677-B	MAST CONSOLE LEFT PLATINUM T9500HRT
C01	024674-B	MAST CONSOLE LEFT T92/T93/T9400HRT
C02	024694-B	MAST CONSOLE RIGHT T92/T93/T9400HRT
C02	024697-B	MAST CONSOLE RIGHT T9500HRT
C03	020134-00	SCREW HEX FT M8X1.25X60 PARTIAL
C04	004482-00	BOLT HH M8X20
C05	004926-00	NUT LK M8
CNS	026639-Z11	CONSOLE ASSEMBLY TM55
CNS	026629-Z11	CONSOLE ASSEMBLY TM54/56
CNS	026571-Z11	CONSOLE ASSEMBLY TM49 PLATINUM
G04	001553-A	SLEEVE HANDLEBAR END
G05	004774-00	BOLT BH M8X135 PARTIAL
G06	004561-00	BOLT FH M8X20
H07	000826-00	BUSHING ELEVATION RACK
H09	020077-00	SCREW HEX M12x1.75Px60L
H10	004591-00	BOLT HH 3/8X47 PARTIAL
H11	005007-00	WASHER LK 12X20X3
H13	005058-00	WASHER FT 12X26X2
H14	005065-00	WASHER FT 10x30x2
H15	020401-00	NUT LK M12
H18	000020-C	WHEEL MOBILE
M01	026570-Z1	MOTOR 2.0HP CAMBRIDGE
M01	016466-Z	MOTOR 2.5 HP CAMBRIDGE-T9200
M01	016352-Z1	MOTOR 2.5HP BALDOR
M03	015024-AA	BRACKET MOTOR T9500HRT
M03	015016-A	BRACKET MOTOR T92/T93/T9400HRT
M07	005005-00	WASHER LK 8.2X15.4X2
M08	004676-00	BOLT EB 1/4X45 3/8EYE
M09	005070-00	WASHER FT 6.5X14X1
M10	004930-00	NUT LK 1/4-20UNC
M11	001858-00	CONTROLLER MOTOR AC ME82J BOARD

T9500HRT (TM54), T9400HRT (TM56), T9300 (TM55), T9200 (TM49) Parts List

M11	013680-DI	BOARD LOWER CONTROL MOTOR-M11
M13	012801-00	MOTOR ELEVATION 110V
M18,M15,H20	004934-00	NUT LK 3/8-16UNC
M19,H19	005062-00	WASHER FT 10.2X19X2
M23	004683-ZB	BOLT EB 1/4X70 1/4EYE PARTIAL
N01	002850-A	OVERLAY CONSOLE T9200
N01	002852-A	OVERLAY PLATFORM 9400HRT/9500HRT
N01	002851-A	OVERLAY T9300
N02	003129-C	TOUCH PAD T92/T93/T9400HRT
N02	003174-A	TOUCH PAD T9500
N05	001901-A	BOARD UPPER T9200
N05	013710-BA	BOARD UPPER T9300 T9400 T9500 T9600
N07	001961-D2	REED SWITCH
N08	000785-00	CUPHOLDER
N10	004359-00	BOLT BH M4X10
N12	004620-00	BOLT BH M4X12
N45	004724-00	SCREW BH M8x1.25Px15
N46	001327-00	FIX PLATE RECEIVER
N47	016475-Z	RECEIVER HRT ASSEMBLY
N48, P19	004351-00	BOLT BH M3X10
P02	003326-00	SWITCH POWER LARGE
P03	003340-C	BREAKER 20A 110V
P07	002130-00	CABLE POWER 110V
P15	004351-00	BOLT BH M3X10
P16	007489-00	BRACKET SENSOR RPM
P18	002254-B	SENSOR SPEED 1035MM
Q01	026411-Z	COVER MOTOR ASSEMBLY UPPER
Q02	001617-C	SIDE RAIL
Q04	004616-Z	SCREW BH M4X12 SELF TAPPING
Q05	000343-E	COVER CONSOLE MAST RIGHT
Q06	000344-E	COVER CONSOLE MAST LEFT
Q07	015075-A	END CAP RAIL SIDE LEFT
Q08	015076-A	END CAP RAIL SIDE RIGHT
R12	004181-00	BELT DRIVE POLY-V 190-J10 T9500 HRT
R12	004169-00	BELT DRIVE POLY-V 190-J8 T9400HRT
R13	019981-A	BELT RUNNING 512X2770X1.6 T92/T93/T94HRT
R13	004237-C	BELT RUNNING 503X2857X2.5 T9500HRT
R14	004496-00	BOLT SH M10X90
V01	005968-B	DECAL VF LARGE SILVER 240MMx43MM
V02	021164-A	DECAL MODEL T9200 VINNIE
V02	021165-A	DECAL MODEL T9300 VINNIE
V02	021166-A	DECAL MODEL T9400HRT
V02	021169-B	DECAL MODEL T9500HRT
V03	006376-A	DECAL VF SMALL CONSOLE METAL
NOT SHOWN	011572-B	MANUAL ASSEMBLY T9200/T9300HRT/T9500HRT
NOT SHOWN	035097-AA	CABLE DATA 8 PIN 3000MM
NOT SHOWN	021938-A	MANUAL OWNERS PLATFORM
NOT SHOWN	002479-A	CABLE DATA 6PIN 3000MM
NOT SHOWN	ZMK1000076	HR TRANSMITTER
NOT SHOWN	002464-A	CABLE CONSOLE JUMPER 700MM-6-PIN
NOT SHOWN	004577-00	BOLT FOR UNDER DRIVE MOTOR