

AIRDYNE - 4 (1990 - PRESENT)



SCHWINN
AIR SYSTEMS

REF#	PART# GRAPHITE	PART# BRONZE	PART# WHITE	2002 DARK GRAY (CHARCOAL)	DESCRIPTION
1	92817	28529	28528	98630	FRAME
2	90815				CHANNEL PLUG -BLACK PLASTIC
3	92818	90562	90563	98632	FRONT / REAR STABILIZER
4	50513				LOCKWASHER
5	90595				LEVELER FOOT
6	95577				LEVELER LOCKNUT
7	90294				SUPPORT PAD
8	92823	95555	92823		COMPUTER
9	91370				BATTERY COVER FOR 92823 ONLY
10	90678				COMPUTER MOUNTING SCREWS
11	90688				CABLE WIRE TIE STRAP
12	90680				COMPUTER SUPPORT TUBE-RIGHT
13	90679				COMPUTER SUPPORT TUBE-LEFT
14	50367				PAN HEAD SCREW
15	50422				KEPS NUT (10 X 32)
16	Graphite	90878	90464	98634	RIGHT CHAINGUARD
17	parts NLA	90877	90465	98635	LEFT CHAINGUARD
18	Charcoal fits	90467	90466	98631	RIGHT LEVER ARM
19	but will be darker	90468	90469	98633	LEFT LEVER ARM
20	90481				OILITE BUSHING (23/32" I.D.)
21	90482				LOCK WASHER
22	90483				LOCK NUT
23	90484				PIVOT BOLT 1/2 X 13 THREAD
24	90485				FOOT REST GRIP
25	90480				CLEVIS PIN
26	90810				COTTER PIN
27	90489				HANDLEBAR GRIPS W/ PLUGS
28	91350				WHEEL CAGE-RIGHT
29	91351				WHEEL CAGE-LEFT
30	50428				SPEED NUT
31	90842				TRANSPORT WHEEL BRACKET
32	90873				HOOK BOLT
33	50422				KEPS NUT
34	90843				TRANSPORT WHEEL
35	90871				TRANSPORT WHEEL AXLE
36	90872				PUSH-ON FASTENER
37	92050				SEAT POST
38	92051				SEAT POST PIN
39	90728				FAN LOCKING KNOB
40	90803				SPRING
41	90804				PEDALS (PAIR)
42	90821				WEDGE PIN ASSEMBLY
43	90840				RIGHT CRANK ARM
44	91064				NYLON WASHER (WHITE)
45	91055				ROLLER BEARING W/ SNAP RING
46	91056				SNAP RING ONLY
47	90822				CONNECTING ARM ASSEMBLY (WITH BEARINGS)
48	90879				RIGHT ECCENTRIC W/ 46 TOOTH SPROCKET
49	90458				CHAIN WITH 1/2 LINK (CRANK TO IDLER HUB)
50	90960				BOTTOM BRACKET W/ LOCK RING L.H. THREAD
51	90961				LOCK RING ONLY L.H. THREAD
52	90880				LEFT ECCENTRIC
53	90841				LEFT CRANK ARM
54	90123				OILITE BUSHING (3/8" I.D.) BAG OF TEN
55	90811				IDLER HUB COMPLETE
	90463				IDLER HUB AXLE SET ONLY
	000-8207				SERRATED AXLE WASHER
56	27229				SPROCKET LOCKRING
57	90540				15 TOOTH SPROCKET
58	90824				CIRCULAR CHAINGUARD
59	90830				CHAIN TENSIONER
60	90823				46 TOOTH SPROCKET
61	91088				SPROCKET MOUNTING BOLT
62	90457				CHAIN (MID-HUB TO FAN WHEEL 92 LINKS)
63	90850				WHEEL ASSEMBLY COMPLETE
	90462				WHEEL AXLE SET ONLY
	000-8207				AXLE WASHER
64	90837				SPEED PICK-UP (SENSOR)
65	90962				SPEED PICK-UP BRACKET
66	90887				SPOKE PROTECTOR RIGHT SIDE
67	90827				SPOKE PROTECTOR MOUNTING CLIP
68	90886				MAGNET
69	90888				SPOKE PROTECTOR LEFT SIDE
70	90540				15 TOOTH SPROCKET
71	27229				SPROCKET LOCK RING



REF#	PART#	DESCRIPTION
72	90833	CIRCULAR CHAINGUARD
73	95535	COMPUTER WIRE
74	93079	SADDLE
75	90496	HANDLEBAR END PLUGS
76	90459	CHAINGUARD HARDWARE SET
77	70801	STABILIZER HARDWARE SET
78	33157	AXLE NUTS
	92707	OWNERS MANUAL
	93028	SELL SHEET PACK OF 25

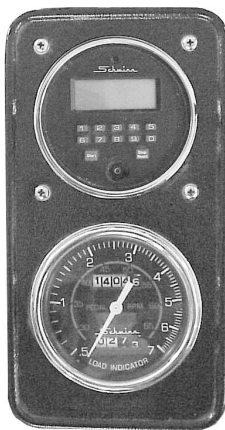


Converting the Airdyne 3 mechanical load indicator (speedometer) to an electronic computer.

The old style mechanically driven load indicator can be converted to a computer by using the following parts.

Note: To maintain proper calibration, you will have to replace the idler hub cog the fan cog and both chains if you use the AD4 computer (part # 92823). This is **not** necessary if you use the AD5 (Airdyne Pro) computer (part # 92900). The AD5 computer can be programmed for all of the Airdyne models.

- 90887 Spoke Protector with magnet**
- 90886 Magnet (not needed if ordering 90887)**
- 90837 Speed Sensor**
- 90962 Speed Sensor Bracket**
- 90827 Clips to hold Spoke Protector (3 Needed)**
- 90679 Computer Support Tube Left**
- 90680 Computer Support Tube Right**
- 90457 Chain Idler Hub To Fan (needed if using AD4 computer)**
- 90458 Chain Crank To Idler Hub with 1/2 Link (needed if using AD4 computer)**
- 90540 15 Tooth Sprocket (needed if using AD4 computer)**



AD3



**AD4
92823**



**AD5 (PRO)
92900**